

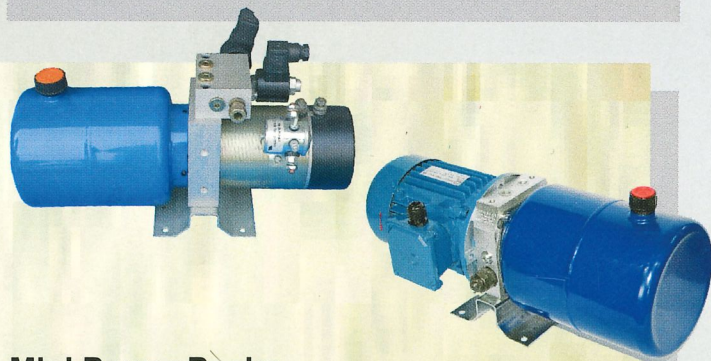
Motor-pump

DC motor from all dimensions,
coupled with gear pump - group 10 or 20



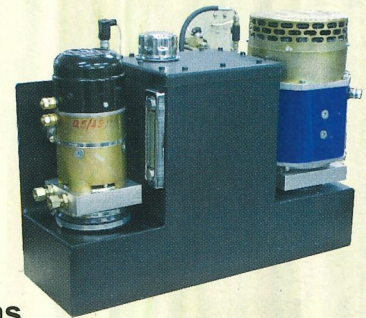
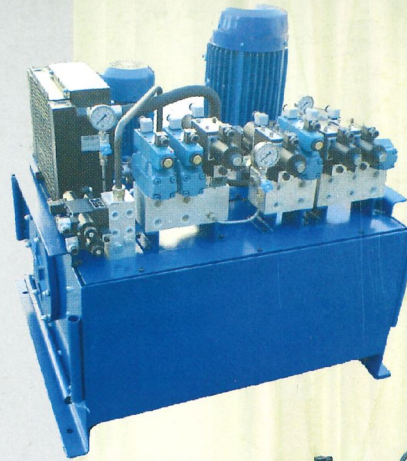
DC Motors

Rated powers 0.2-10 kW
Rated voltages 12-80 V DC
Rated speed 1500-3000 r.p.m



Mini Power Packs

El. Motors: AC, DC – up 3 kW
Tank volume: 1...60 L
Pump displacement: 1...6,1 cm³
Wide range of modular elements allowing
implementation of additional
hydraulic schemes.



Hydraulic systems

El. motors
AC - to 25 kw; DC to 5 kW
Capacity of the tank: to 500 L.;
Produced with a large
variety of elements - accumulators,
coolers and others for the realization
of the customer concrete request.



BULMAK GMBH

Boschstraße 38, 50171 Kerpen
Telefon (0 22 37) 92 326 - 0
Telefax (0 22 37) 92 326 - 29